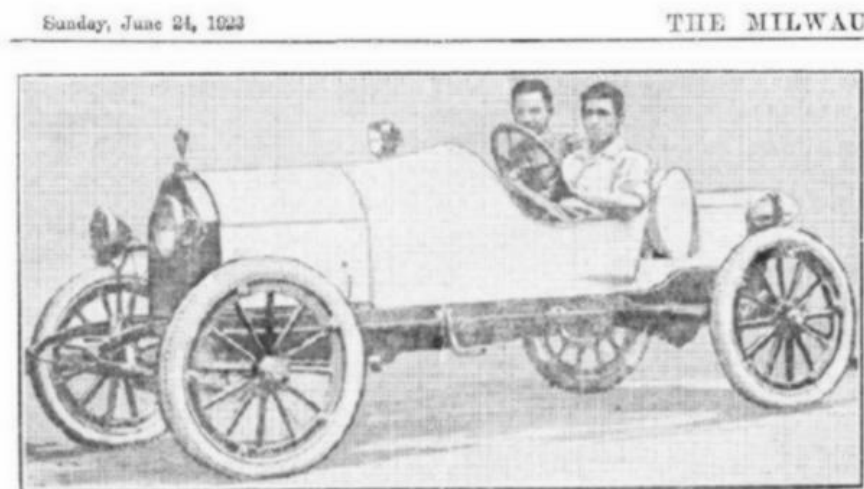


LeRoy's Monroe



The car in the photo appears to be a circa 1916-17 Monroe, probably with a racing body replacing the regular roadster body. There were several firms that sold aftermarket racing bodies in that time period. Monroe automobiles were made in Flint, MI from 1914-16, Pontiac, MI from 1916-18 and in Indianapolis from 1918-1923. The 1916 Monroe sold for \$495. and in 1917, the roadster model sold for \$595. It was a four-cylinder car with 15 hp and a 96" wheelbase.

Information courtesy of Kim Miller, AACA Library



With Harold Tempe, 771 Washington-bld, at the wheel and LeRoy Cleveland, 374 Farwell-av, as passenger, the little two seated racer

shown above started on a 3,000-mile trip to the west coast Saturday afternoon. The tourists expect to take in all sights along the route, extend-

ing their trip over a period of two months. Los Angeles will be the turning point for the homeward journey.

The text of the caption reads: With Harold Tempe, 771 Washington-bld at the wheel and LeRoy Cleveland, 374 Farwell-av, as passenger, the little two seated racer shown above started on a 3000 mile trip to the west coast Saturday afternoon. The tourists plan to take in all the sights along the route, extending their trip over a period of two months. Los Angeles will be the turning point for the homeward journey.